
ZDownloader Fonts User Guide



Before launching the ZDownloader application you must save the desired font from the CD to a location on your computer. Then launch the ZDownloader application and follow the procedures below.

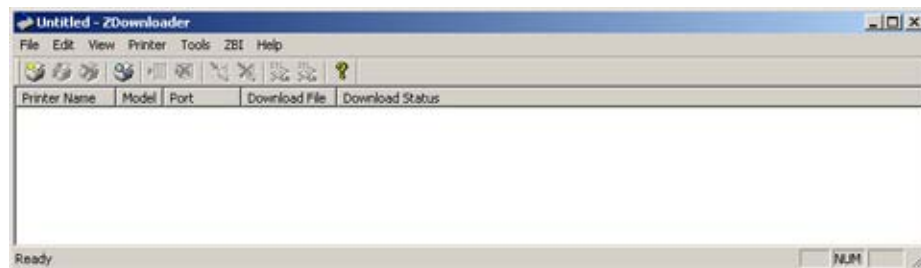
Using ZDownloader

This application can update firmware and fonts in Zebra printers connected by serial, parallel, USB, and IP Ethernet network.

1. Open the Firmware Downloader.

See [Figure 1](#). The ZDownloader screen comes up with a blank printer list.

Figure 1 • Downloader Screen (blank printer list)



Important • A Zebra printer must appear under the Printer Name column before you can send a file.

2. Do you already have a .zps printer list created?

If...	Then...
Yes	<p>a. Select the menu option “File→Open printer settings file...”.</p> <p>b. Locate the .zps file you have saved and then open it.</p> <p>c. Are all printers listed that you want to load the fonts on?</p> <ul style="list-style-type: none">• If no, continue with <i>Add to a Printer List</i>.• If yes, go to <i>Save/Restore Printer Settings on page 7</i>.
No	Continue with <i>Add to a Printer List</i> .

Add to a Printer List

There are two ways to add printers to the list:

- Auto-Detect

Use Auto-Detect to add your printer(s) if they are connected via USB or an IP Ethernet. All printers connected via the USB interface will have the list designation USB. The program can support as many USB printers as the computer can support. The maximum number of USB devices that can be supported by the computer (typically) would be 255.

- Manual


Use Manual to add your printers if they are connected via the serial or parallel interfaces, or if they are not detected by using Auto-Detect method.



Important • USB printers can only be added by using Auto-Detect. All printers connected via the USB interface will have the list designation of USB. The program can support as many USB printers as the computer can support. The maximum number of USB devices that can be supported by the computer (typically) would be 255.

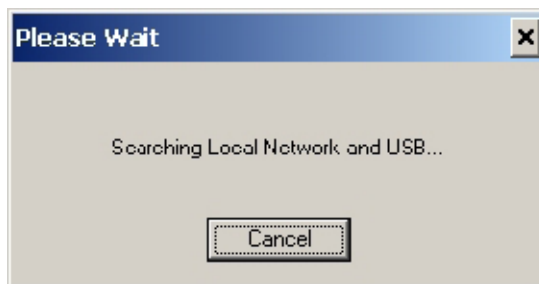
Auto-detect Printers

To Auto-Detect printers connected via the USB or IP Ethernet interfaces, do one of the following:

- Select the “Auto-Detect” Toolbar button .
- Select the menu option “Printer→Auto-Detect”.
- Right click in the list and select “Auto-Detect Printers”.

Once you start an Auto-Detect, the Please Wait dialog box appears. See [Figure 2](#).

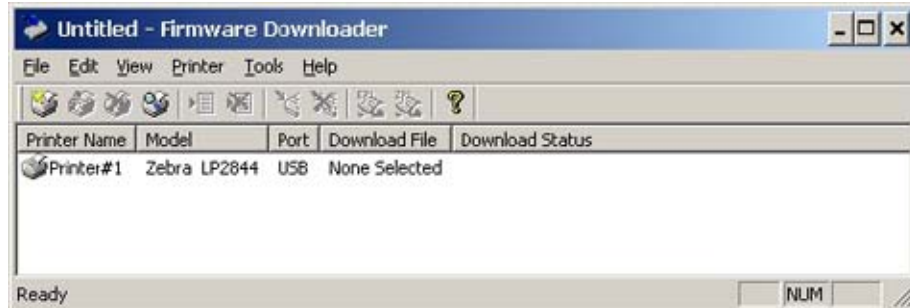
Figure 2 • Auto-Detect Dialog Box



You can cancel Auto-Detection at any time by selecting Cancel.

See [Figure 3](#). Once the Auto-Detection is complete, all detected printers will be added to the printer list.


Figure 3 • Printer List



Note • Ethernet-connected printers are detected when the application broadcasts a UPD packet out onto the network using port number 4201 for the discover process. See your network administrator for more information. If you are not able to Auto-Detect your network printers, use [Add Printers Manually](#) procedure that follows.

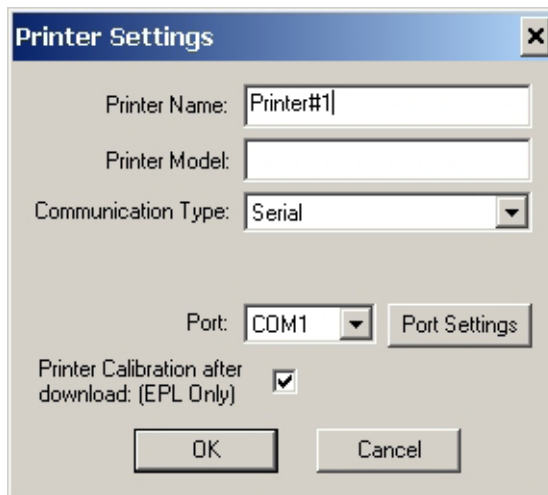
Add Printers Manually

To manually add a printer to the list, do one of the following:

- Press the “Add Printer” toolbar button .
- Select the menu option “Printer→Add...”.
- Right click on the list and select “Add Printer...”.

The Printer Settings dialog appears. See [Figure 4](#).

Figure 4 • Configuring a Serial Printer



Select the communication type for the printer you have chosen.

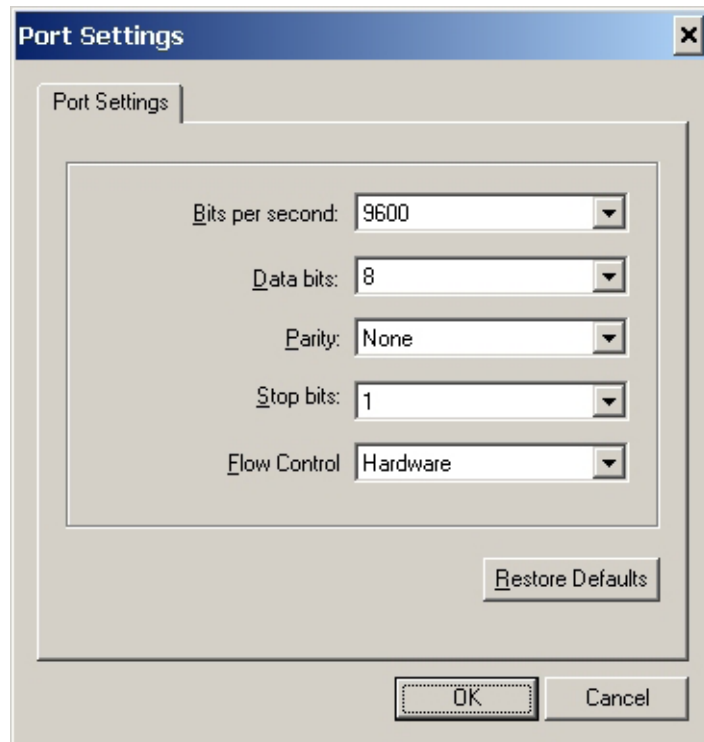
If have a...	Then...
Serial	Continue with <i>Add a Serial Printer Manually</i> .
Parallel	Go to <i>Add a Parallel Printer Manually</i> on page 6.
Network	Got to <i>Add a Network Printer Manually</i> on page 6.
USB	Must be Auto-detected. Got to <i>Auto-detect Printers</i> on page 3.

Add a Serial Printer Manually

Configure the port settings by pressing the Port Settings button.

1. Print a configuration label for your printer.
2. Locate the Port Settings on the configuration label.
3. Select the serial port to which the printer is connected and then select Port Settings.
 The Port Settings dialog box will appear. See [Figure 5](#).

Figure 5 • Serial Port Settings



4. Enter the information from the configuration label into the proper boxes and then select OK.

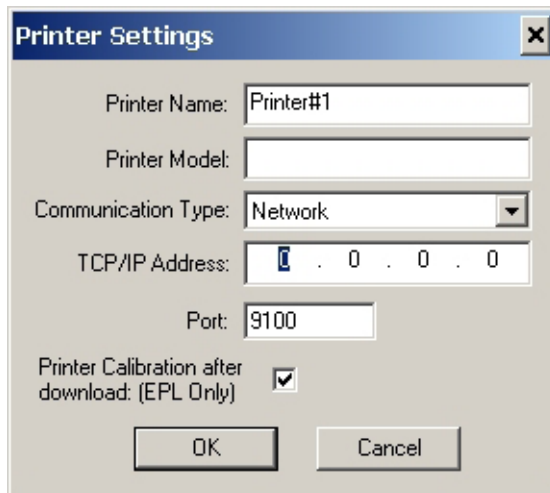
Add a Parallel Printer Manually

1. Select the Parallel Communication Type.
The available parallel ports will be shown in the Port combo box.
2. Select the port to which the printer is connected.
3. Select OK.

Add a Network Printer Manually

1. Select Network Communication Type.
2. Enter the TCP/IP address and the communications port number for the printer.


Figure 6 • Configuring a Network Printer



3. Select OK.

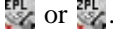

Delete Printers from the List

To delete printers from the printer list:

1. Select the printer or printers to be deleted.
2. Do one of the following:
 - Select the “Delete Printer(s)” toolbar button .
 - Select the menu option “Printer→Delete”.
 - Right click on the printer(s) to be deleted and select “Delete Printer(s)”.

Print Test Page

To print a Test page, do one of the following:

- Select the Printer(s) desired and then select one of the “Print Test Page” toolbar button  or .
- Select the menu option, “Printer→Print EPL Test Page”, or “Printer→Print ZPL Test Page.”
- Right click on the selected printers and then select “Print EPL Test Page”, or “Print ZPL Test Page”.

Save/Restore Printer Settings

Once you have created your list of printers you can save the settings to a file for later use.

To save the printer settings:

1. Select the menu option “File→Save Printer Settings” file.

You will be prompted for a file name for the settings file.

Printer settings files are stored as .zps files. If you exit the application without saving your printer settings you will be prompted as well.

To restore previously saved printer settings:

2. Select the menu option “File→Load Printer Settings File”.

This will erase any printers that are displayed in the printer list, and replace them with the printers saved in the settings file.

Select the Font File to Download



Note • You can download to multiple printers, but only one font file at time.

To download fonts to your printer(s), you must select the font file to send to each printer.


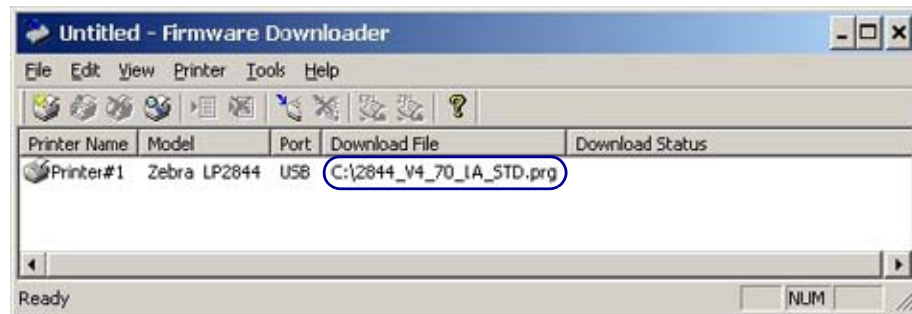
1. Select the file by left clicking on the printer and then do one of the following:
 - Select the “Select Firmware File” toolbar button .
 - Select the menu option “File→Select Firmware File”.
 - Right clicking on the select printer(s) and then selecting “Select Firmware File”.
2. The file that you select will appear in the printer list. See [Figure 7](#).

Figure 7 • Firmware Downloader Ready to Start Download



If multiple printers use the same font file, select those printers using standard Microsoft list selection keys (e.g., hold shift down to select a range of printers, hold control down to select individual printers). Once selected, use the same actions described above to select the font file.

Printers that are present in the list, but do not have a fonts file selected, will be ignored when Downloading starts. See [Update the Printer Fonts on page 9](#) to update the printer fonts.

Update the Printer Fonts

See [Figure 7 on page 8](#). Once you have configured the printers in the list, you are ready to start updating the printers.

1. Are you updating all printers in the list?


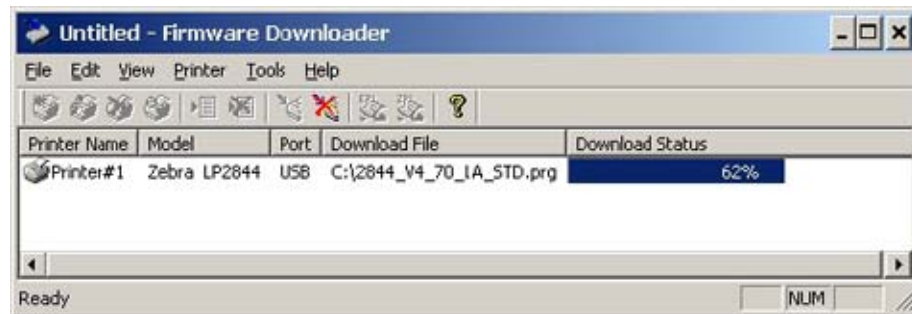

If...	Then...
Yes	Do one of the following <ul style="list-style-type: none"> • Select the “Download to All Printers” toolbar button . • Select the “Printer→Download All” menu option.
No	Select the printer(s) and then select the menu option, “Printer→Download To Selected”.


Figure 8 • Firmware Downloader Downloading Fonts File



Once Downloading has begun the Progress of each printer will be shown in the “Download Status” column as shown in [Figure 8](#).

The “Cancel Download” toolbar button  and the “Printer→Cancel Download” menu options become active.

To cancel ALL downloads in progress, do one of the following:

- Select toolbar button  or the menu option “Printer→Cancel Download”
- Right click on the printer list and select “Cancel Download”.

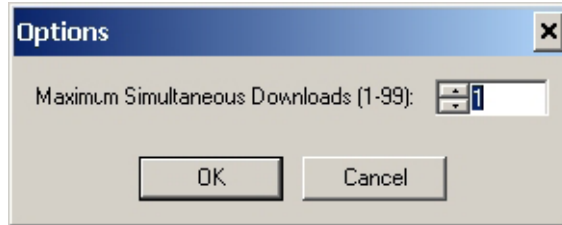
Simultaneous Downloads

If you have several printers, you can increase the number of simultaneous downloads, which will reduce the overall time it takes to update the printer fonts.

1. Selecting the “Tools→Options” menu.

The dialog box in [Figure 9](#) displays.

Figure 9 • Options Dialog



2. Enter a number between 1 and 99.

The default number of simultaneous downloads is 1. Increasing this number causes several printers to updated simultaneously.



Note • More simultaneous downloads require more of your computer resources. Some computers may slow down as more printers are added.



Zebra Technologies Corporation

Zebra Technologies Corporation
475 Half Day Road, Suite 500
Lincolnshire, IL 60069 USA
T: +1 847 634 6700
Toll-free +1 866 230 9494
F: +1 847 913 8766

Zebra Technologies Europe Limited

Dukes Meadow
Millboard Road
Bourne End
Buckinghamshire, SL8 5XF, UK
T: +44 (0)1628 556000
F: +44 (0)1628 556001

Zebra Technologies Asia Pacific, LLC

120 Robinson Road
#06-01 Parakou Building
Singapore 068913
T: +65 6858 0722
F: +65 6885 0838

<http://www.zebra.com>

© 2010 ZIH Corp.



Printed on
chlorine-free
recycled paper.

